

FreeDrumLessons.com

- Up Tempo Swing Play-Along -

This song is played at a fast tempo. Add as much snare and bass comping as you can to fill up the beat.

8 Bar Intro

Musical notation for the 8 Bar Intro. The first four bars feature a triplet of eighth notes on the snare line, with 'x' marks on the bass line indicating comping. The last three bars feature a double eighth note on the snare line, also with 'x' marks on the bass line. The notation is written on a single staff.

Guitar Melody 4X

Musical notation for the Guitar Melody 4X section. It follows the same 8-bar structure as the intro, with triplets in the first four bars and double eighths in the last three bars. The notation is written on a single staff.

Piano Solo 4X

Musical notation for the Piano Solo 4X section. It follows the same 8-bar structure as the intro, with triplets in the first four bars and double eighths in the last three bars. The notation is written on a single staff.

Play a softer swing pattern with your hi-hats and cross stick for the bass solo.

Bass Solo 4X

Musical notation for the Bass Solo 4X section. It follows the same 8-bar structure as the intro, with triplets in the first four bars and double eighths in the last three bars. Above the first four bars, there are circled plus signs indicating a softer swing pattern. The notation is written on a single staff.

Play time for 8 bars, then an 8 bar solo for this section. Trade off with the piano, guitar, and bass solo.

Trading 8's With
Band Solos 4X

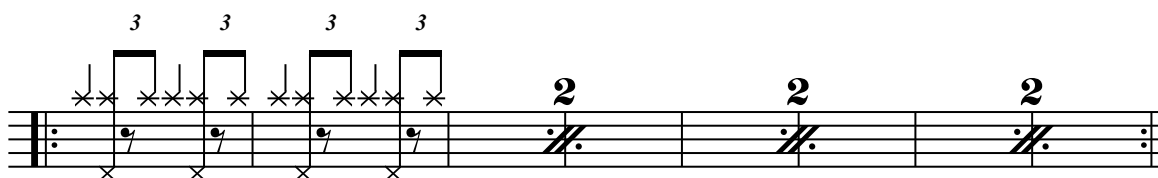
Musical notation for the Trading 8's With Band Solos 4X section. It follows the same 8-bar structure as the intro, with triplets in the first four bars and double eighths in the last three bars. The notation is written on a single staff.

8 Bars of solo.



After the trading 8's solos, play the main swing pattern with comping.

Guitar Melody 3X



Watch for the shots at the end of the song.

Outro

